



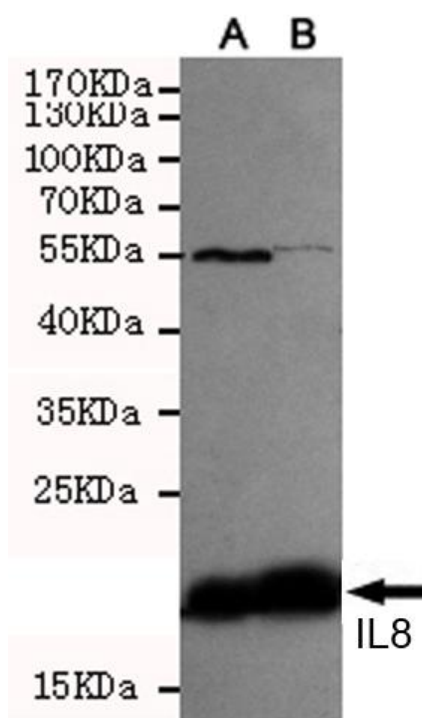
## IL-8 mouse mAb

|                          |   |
|--------------------------|---|
| <b>Catalog No</b>        | YP-Ab-15854   |
| <b>Isotype</b>           | IgG   |
| <b>Reactivity</b>        | Human   |
| <b>Applications</b>      | WB;ELISA  |
| <b>Gene Name</b>         | il8   |
| <b>Protein Name</b>      |   |
| <b>Immunogen</b>         | Purified recombinant human IL8 protein fragments expressed in E.coli.   |
| <b>Specificity</b>       | This antibody detects over-expressed and recombinant levels of IL8 and does not cross-react with related proteins.  |
| <b>Formulation</b>       | Liquid in PBS containing 50% glycerol, 0.5% BSA and 0.02% sodium azide.   |
| <b>Source</b>            | Monoclonal, Mouse   |
| <b>Purification</b>      | The antibody was affinity-purified from mouse ascites by affinity-chromatography using epitope-specific immunogen.  |
| <b>Dilution</b>          | wb 1:500  |
| <b>Concentration</b>     | 1 mg/ml   |
| <b>Purity</b>            | ≥90%  |
| <b>Storage Stability</b> | -20°C/1 year  |
| <b>Synonyms</b>          | (Ala-IL-8)77;(Ser-IL-8)72;3 10C;310C;AMCF 1;AMCF1;b ENAP;Bbeta thromboglobulin like protein;Beta thromboglobulin like protein;C-X-C motif chemokine 8;CXC chemokine ligand 8;CXCL 8;CXCL8;Emoctakin;GCP 1;GCP-1;GCP/IL-8 protein I;GCP/IL-8 protein II;GCP/IL-8 protein III;GCP/IL-8 protein IV;GCP/IL-8 protein V;GCP/IL-8 protein VI;GCP1; Granulocyte chemotactic protein 1;IL 8;IL-8;IL-8(1-77);IL-8(9-77);IL8;IL8/NAP1 form I;IL8/NAP1 form II;IL8/NAP1 form III;IL8/NAP1 form IV;IL8/NAP1 form V;IL8/NAP1 form VI;IL8_HUMAN; Interleukin 8;Interleukin8;K 60;K60;LECT;LUCT; Lymphocyte derived neutrophil activating factor;Lymphocyte-derived neutrophil-activating factor;LYNAP;MDNCF;MDNCF-b;MDNCF-c; MONAP;Monocyte derived neutrophil activating peptide;Monocyte derived neutrophil activating protein; Monocyte derived neutrophil chemotactic factor;Monocyte-derived neutrophil chemotactic factor;Monocyte-derived neutrophil-activating peptide;NAF;NAP 1; NAP-1;NAP1;Neutrophil activating factor;Neutrophil activating |
| <b>Observed Band</b>     | 20kD  |



|                                  |   |
|----------------------------------|---|
| <b>Cell Pathway</b>              | Secreted.   |
| <b>Tissue Specificity</b>        | Chronic myeloid leukemia cell,Kidney,Lung,Lung carcinoma,Neutrophil,Periphe   |
| <b>Function</b>                  | function:IL-8 is a chemotactic factor that attracts neutrophils, basophils, and T-cells, but not monocytes. It is also involved in neutrophil activation. It is released from several cell types in response to an inflammatory stimulus. IL-8(6-77) has a 5-10-fold higher activity on neutrophil activation, IL-8(5-77) has increased activity on neutrophil activation and IL-8(7-77) has a higher affinity to receptors CXCR1 and CXCR2 as compared to IL-8(1-77), respectively..online information:Interleukin-8 entry,PTM:Several N-terminal processed forms are produced by proteolytic cleavage after secretion from at least peripheral blood monocytes, leukocytes and endothelial cells. In general, IL-8(1-77) is referred to as interleukin-8. IL-8(6-77) is the most prominent form.,similarity:Belongs to the intercrine alpha (chemokine CxC) family.,subunit:Homodimer., |
| <b>Background</b>                | The protein encoded by this gene is a member of the CXC chemokine family. This chemokine is one of the major mediators of the inflammatory response. This chemokine is secreted by several cell types. It functions as a chemoattractant, and is also a potent angiogenic factor. This gene is believed to play a role in the pathogenesis of bronchiolitis, a common respiratory tract disease caused by viral infection. This gene and other ten members of the CXC chemokine gene family form a chemokine gene cluster in a region mapped to chromosome 4q. [provided by RefSeq, Jul 2008],  |
| <b>matters needing attention</b> | Avoid repeated freezing and thawing!  |
| <b>Usage suggestions</b>         | This product can be used in immunological reaction related experiments. For more information, please consult technical personnel.   |

## Products Images



Western blot detection of IL8 in CHO-K1 transfected by IL8-PDGFR fusion protein cell lysate using IL8 mouse mAb (1:500(A)-1:1000(B) diluted).

Indirect ELISA assay for anti-IL8 mouse mAb. Antigen coating concentration: 8ug/ml.